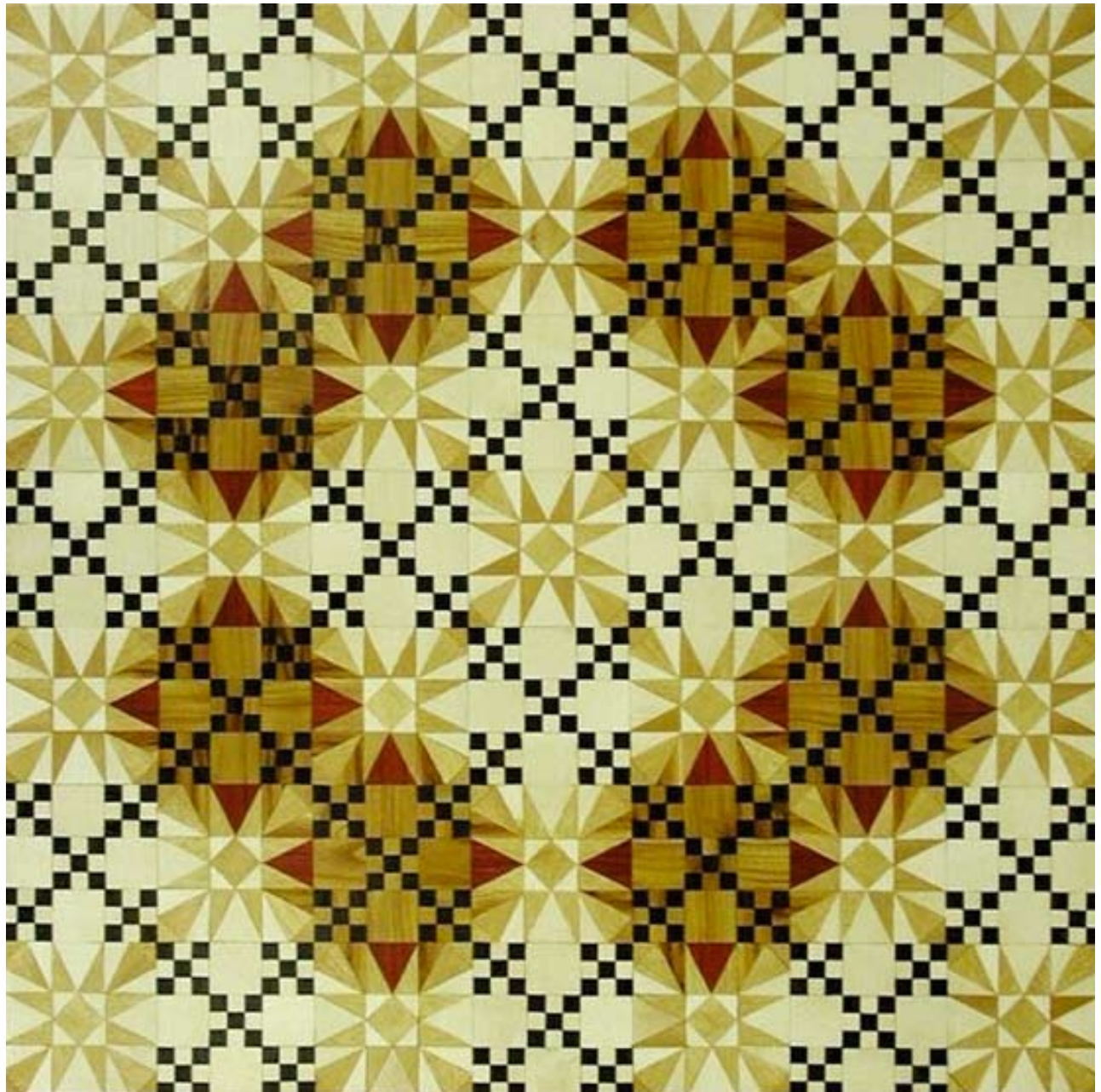


ShopTalk

Greenville Woodworkers Guild



January 2018



David Adler Woodart | PARQUETRY

Join us for David's presentation on Monday January 8.

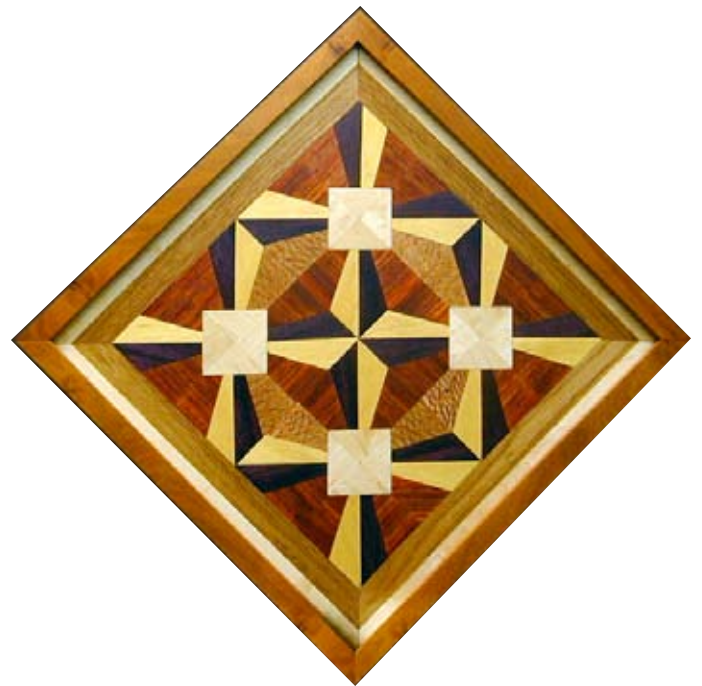
David Adler / **A life-long passion**

When I was a young boy about 9 years old I had a neighbor who was a woodworker and crafter who made all kinds of items. I used to visit him, especially in the summer when I would see him in his garden, and we would go into his woodworking shop sometimes. On one of these visits he saw my interest in wood and said, "Working with wood is a bond between man and nature." These words have stuck with me all these years and are more meaningful to me now than when I was 9 years old. I am basically a third generation woodworker/lover. My grandfather, mother, and her brother were all into woodworking of one form or another.

Until now my career has been as a Manufacturing Engineer. This has given me the ability to figure out how to make the Parquetry with different tools. All of my work is handmade, one-of-a-kind.

I started doing wood art in September of 2000 (I was a late bloomer). Until then all I did with wood was finish rooms in the houses I've lived in, or the odd piece of furniture every now & then. However, since I started this "hobby" it has overtaken my left-brained Engineering life. If I don't get to work on one of my wall hangings, or just cut wood for a few days, I get a bad case of wood withdrawal and my body and mind start to crave for a fix! Yes, I am a sawdust Junky.

Parquetry is the use of wood 1/8-inch thick or thicker, placed together to form geometric patterns. The most common place you will find Parquetry today is in wood flooring, though most wood inlay work done is another art form called Marquetry. The basic difference between the two is that Marquetry uses veneer woods with a thickness of 1/16 of an inch or



less, and is primarily cut with a sharp knife, or scroll saw by hand. It consists of scenery, floral patterns and other ornate embellishment, and is used on furniture.

The inlaying of geometric patterns goes back to ancient cultures. We find examples of inlaid patterns in the Incan, Mayan, Chinese, Egyptian, Greek and Roman cultures. These are almost entirely done in stone. We can also find Geometric patterns in textile weaving from ancient times and even in North American native cultures. The earliest forms of wood parquetry are from European woodworking in the middle ages. During the Industrial Age Parquetry was transformed from hand-cutting and inlay-fitting to the use of machine-assisted cutting with modern tooling.

In my work I use all natural products. The only man-made items are the 11-layer craft birch plywood, water-based wood glue, and metal hangers. Otherwise, I use 100% natural wood and its intrinsic beauty. My collection is over 170 different types and colors of wood. All of my wall hangings are finished only with Danish oil (boiled linseed oil) with a Carnauba wax hard coat finish. My utilitarian works (coasters, trivets, hot plates and jewelry) are top coated with water-based polyurethane instead of Carnauba wax. I use no stains, paint, or any other artificial coloring to bring about the beauty in my work.

Most of my designs are from modified quilt patterns as well as my own and my wife's designs. She is a quilter and my inspiration in what I do. I also make non-geometric compositions from other sources. These pieces are made with a scroll saw.



2017-2018 Officers

Ken Fissel
President

Rob Barhorst
Executive Vice President

Bill Fuller
Treasurer

Chuck Graham
Secretary

Allison Yanover
Vice President, Communications

Bill Keener
Vice President, Educational Activities

Russell Stall
Vice President, Fund Raising

Rudd Veltman
Vice President Charitable Projects

Aubrey Rogers
Guild Accountant

Karl Kelly
Education Center Superintendent

David Aman
At Large

John Broach
At Large

Al Socha
At Large

Bill Gay
Accountant Emeritus

Greenville
Woodworkers Guild
P. O. Box 825
Mauldin, SC 29662
864-299-9663

www.greenvillewoodworkers.com

Ken Fissel
President



THE PRESIDENTS CORNER

We now have another year in the books and we can reflect upon where we've been and look ahead to where we are going. We, as the governance, are faced with some real challenges if we are to keep the guild on track and true to our mission. I feel we've taken a few steps in the wrong direction, as our focus has veered away from our service to our community and shifted somewhat to "what's in it for us". We are facing a future of uncertainty in that there are factions within our ranks who are advocating major changes in our shop, our philosophy, and the very focus of what the guild stands for. We have a reputation for being givers, not takers. I think we need to devote more energy and resources towards our mentoring, further development of our youth program, and the capabilities of our infrastructure, in order to better position ourselves to build our skills and fulfilling our educational mandate. One of our members called me a few days ago to chew on me about our proposal to do a major upgrade to our audio visual system. His take is that what we have is "good enough".

Well, to my way of thinking I won't accept a guild that is merely "good enough"! Good enough is not enough! We have never accepted that level of quality and we cannot sink to it now. Our community expects us to excel. I expect us to excel, and if you think that "good enough" is good enough then I invite you to take a good look at why you joined the guild.

We expend a great amount of energy in order to demonstrate to our community that we are an honorable institution. We've become known for that by our constituents. Imagine how we will fall in stature if we revert to "good enough". Apply that same logic to our mentors, for instance. If they teach at the level of "good enough" what will our projects look like? Sloppy joints, ill

fitting drawers, doors & hardware, visible tool marks on our turnings. I think not! Our greatest resource is our members. It's up to each of us to hold each other to ever higher standards so we can offer our service to those less fortunate than ourselves. Where is the vision of service that was in the hearts of those who came before us? Where is it in those we are leading? Imagine if you will, that we are the greatest example of a woodworking guild in the world. It takes little imagination, as I know of no other that even comes close to our facility, our service philosophy, or the giving spirit of most of our members. Now, also imagine if the doors were closed, and we were no longer able to operate within this climate of giving. Such a failure would be catastrophic in so many ways. How would the kids at the Children's Hospital get that boost provided by the Beads of Courage treasure boxes produced in our shop, or the children at the Meyer Center who need special fixtures just to function? As you know, we support many charities in our community and unless we remain true to our mission, there is a real possibility our guild, as we know it, could go away.

I'm not preaching gloom and doom here, but if we do not keep up our due diligence there is always the possibility that we can mismanage our way out of existence. We must all be working towards our common lofty goals, and refrain from inciting discontent, in order to further our own agenda.

Teamwork is the order of the day with many teams woven into the fabric that is our Woodworkers Guild. United We Shall Stand, but Divided We May Fall.

I think the guild is worth fighting for. Will you fight for it too?

Classes and Mentoring

Bill Keener and David Dewease are putting the class and mentoring programs together for offerings to be announced just after the beginning of 2018.

When signing up for these sessions, please check the dates and be sure the session you sign for is the one you want and you meet the requirements. David is very accommodating when members want to make changes, but it comes at a price. Often he gets changes too late in the game to allow another person on the wait list to be bumped up and be included. For the fall session, 10% of all registrations were cancelled before the classes started.

So, please be aware of the details of the classes, so that others who wish to be placed on the rosters have a reasonable chance and notice to attend in your place.

Metropolitan Arts Council Show

The Woodworkers Guild has been invited to present another show at the Metropolitan Arts Council next summer. The date for the show will be July 27th thru September 9th of 2018. We will begin accepting display items at the shop on July 17th. Items will be delivered to the MAC gallery on July 24, 2018.

So, please, get those creative juices flowing, and target these dates so we can present a show greater than last year's showing, which was received extremely well.

Wood Available at the Guild

We have had several NEW species of lumber arrive at the Guild lately. We now have in stock European Beech, Brown Hard Maple, Wenge, Curly Maple (Tiger Maple), Bocote, Purpleheart, Sapele, Quarter Sawn White Oak, Lyptus a new shipment of Black Walnut and some Exotic shorts in Bloodwood, Canarywood, Bubinga and Curly Purpleheart in addition to our regular stock.

We also have available several varieties of turning blanks, and the rough turned cherry bowls. Please come by and take a look and if it looks good buy it! As you know, wood sales makes up about 25% of our operating budget, and these prices reflect a modest mark up over our wholesale prices, and are still priced less than retail at outside sources. When selecting lumber from the bins, please use caution and remember to return the bins to good order. We have been finding the bins left in disarray, which is not good for the wood or safety.

Thanks,

Danny Goodson

Wood Resource Manager

Proposed Craftsman's Bus Trip to Historic Charleston.

If you are interested in this trip please contact Ken Fissel so he can finalize the plans. pres@greenvillewoodworkers.com

Dates :

Depart GWG at 2 PM February 22, 2018
(Arrive Charleston Hotel Approx. 5 p.m.)

Return Sat February 24, 2018 Approx.. 4:30 p.m.
(Depart Charleston Approx. 1 p.m.)

Cost will be \$350 Single or \$300/person double
(+/- Final quote is not in yet)



Hotel:

Marriott Spring Hill Suites Charleston Downtown/Riverview
98 Ripley Point Dr., Charleston 29407

Thursday February 22, 2018

Depart GWG 2 p.m. - Arrive Charleston Hotel Approx. 5p.m. (Dinner on your own)

Friday February 23, 2018:

Breakfast at the hotel

Depart Hotel at 9:30 a.m.

Bus to American College of the Building Arts

Lunch 11:45 (BRAISED in the SOUTH)

Bus, return to Hotel @ 4:30

Dinner on your own

Saturday February 24th 2018 Bus departs Charleston promptly at 1 p.m.

Breakfast at the hotel

Free time for shopping (or we can determine another activity)

Lunch on your own



Gedney Howe Calhoun Mansion, Charleston, SC

Charleston was a leader in furniture manufacturing and its proximity to the West Indies made it easy to import exotic woods, which furniture makers used lavishly.



Women of the Guild

Billie Aman
Vicki Coker
Lou Jolley
Charline Stanto
Karen Sheldon
Allison Yanover
Susan Ingram
Krystal Ingram
Megan Kelly
Sandy Cochran
Neda Zivokovic
Sandy Rauh
Marge Brett
Rosie Gaddy
Rosie Kilton
Louise Broach
Lewellen Mills
Ruth Harvey
Marta Shulze

One of the greatest components of any organization is its people, who rise to the challenges of day-to-day operations, and our Guild is no exception. In our busy shop, a handful of women are major factors when it comes to the success of the guild. Unfortunately, their contributions are sometimes overlooked or they do their jobs quietly and so well that their actions may seem invisible, or taken for granted. I'd like to let all the gals, who do so much for the guild, know that's not the case, and your efforts are very much appreciated! I would also like to shine a spotlight on the small group of working women members of our guild, and what they do. All of them do important work, so please give them some thanks when you see them in the shop. Let's start with Billie Aman who has spent countless hours tending to our library; straightening, cataloging and indexing so that things are where they need to be and easy to find. Billie inherited the position from Vicki Coker. Are you aware that because of this extensive collection of project ideas and plans that we can use the name of Education Center in our communications?

Also we have skilled mentors, such as Lou Jolley, who teaches a hands on carving class at weekly sessions, along with lending a hand with the toys, and Charline Stanton who is a youth lathe mentor. Two of our supervisors, Karen Sheldon and Allison Yanover can be seen covering several shifts each month, and this past winter and spring mentored a charter school student with her senior project. Allison also sits on the Board of Directors as VP of Communications and has recently created and maintains Facebook and Instagram accounts for the guild. Susan Ingram is our newly appointed Events Manager, taking the reins from long time guild member Sandy Cochran. She is already making an impact with events like the supervisor's picnic and most recently our Christmas party. Her daughter Krystal and friend Megan, who are both enrolled in our Youth Program, also assist. They make a fine chocolate cake and cookies too! An interesting sidelight to this is Susan keeps in close contact with Sandy and I'll bet Sandy feels good about keeping in touch with the pulse of the guild. Neda Zivokovic is a hardworking, valued member of the Mental Health Crisis Center desk project. As part of the membership committee, Sandy Rauh does important behind the scenes work, with weekly updates to keep our membership information current and accurate. With weekly reconciliation of all those incoming brown envelopes generated from the lumber sales, Marge Brett assists two departments by keeping our lumber inventory and accounting in check (she bakes outstanding banana bread for us as well). Rosie Kilton spends time tending to our shrubs and flower beds and sewing and quilting as the need arises (and also makes stellar mint brownies). Are you seeing a pattern here? Rosie Gaddy oversees the upcoming bird-house competition. Then, there is our toy program, which is enthusiastically supported

by Louise Broach, Lewellen Mills and Ruth Harvey. These ladies suffered through hanging out with a bunch of cantankerous old men from March to November, all because of their love, to help spread joy and smiles to kids. Now that's sacrifice!

Marta Shulze is one of our young people who are helping with a pen making project, and doing quite well at it.

These are the ladies we see on the surface, but we also owe an equal debt of gratitude to the wives, partners and significant others of us who are in the shop tending to machinery, teaching classes, attending meetings, handling wood and otherwise working to keep true to our Guild mission. Some may argue this point saying it's OK, just to keep us men from being underfoot, but, the truth is, it's nice to spend time with our partners.

Don't see your name in this article? Want to do something positive for the guild? There is always something you can contribute if you would like to be counted in this lofty group... just Ask! We can find a spot for you, where you can fill an important void. For instance, I'm looking for writers for the newsletter, and grants, just to name two spots to be filled.

So ladies, my hat is off to you. The guild is a better place for your involvement, and we surely appreciate all you bring to our organization. Thank you all!

Ken Fissel

Birdhouse Contest

Judging will be at the February 2018 guild meeting.

Open to adults and youth under 18 years if age.

Prizes will be given in 3 categories:

Functional

Decorative / Whimsical

Green - Recycled materials

You may enter only one birdhouse in each category.

Birdhouse must be 75% wood.
No kits allowed

Categories

The sky is the limit! Be creative! Your birdhouse can be traditional or an original design. No birdhouses made from kits will be allowed.



Functional Birdhouse:

A birdhouse entered into the functional category can best be described as a working birdhouse. It will be judged on the following criteria, in order listed: craftsmanship, functionality (for birds), able to be mounted, easy access for cleaning, type of material used and aesthetics.

Decorative/Whimsical:

A birdhouse entered into this category can be used indoors or out and not necessarily functional. It will be judged on the following criteria, in order listed: aesthetics, imaginative theme, texture, color, composition, and craftsmanship.

“Green”:

Think repurposed, environmentally friendly, recycled. Green birdhouses can be functional and / or decorative.



NOTES:

- Each house can only qualify for one category, but you can enter more than one category.
- Birdhouses must be made by the person entering the contest and made within the last year.
- All entries must be in good taste.
- Winners will be announced at the end of the Feb. GWG meeting.
- Entries must be at the GWG no later than 6:30pm the night of the meeting. An entry form will be available then.

Bird lovers choice award

All those attending the February GWG meeting are invited to judge the birdhouses before the meeting using your spare change to vote for your favorite. No \$limit. Vote for as many birdhouses as you wish. Each 1¢ is worth one vote. Your spare change votes will be donated to the GWG for shop supplies, such as sandpaper, etc.



**CHARITABLE
PROJECTS
2017**

Project	Leader	Status
Wade Hampton High School – Display Case.....	Bill Ensor.....	Completed
The Dream Center – Counter.....	Dick Best.....	Completed
Ronald McD House – Headboards.....	Bill Bagwell.....	Waiting installation
Piano Surround.....	Jon Rauschenbach.....	Completed
Doll House.....	Bob Gulotty.....	Completed
Fiber Studio Tables.....	Roger Cottrell.....	Completed
Butterfly Boxes.....	John Arnold.....	Completed
Mental Health America – Tables.....	Jon Rauschenbach.....	Phase 1 complete
Cello/Viola Storage Racks.....	Mike Mathers.....	Starting soon
MHCC – Benches.....	(Pending).....	In progress
MHCC – Displays.....	(Pending).....	In progress
Wheel Chair Pad.....	John Arnold.....	Completed
TCMU – Reading Bench.....	(Pending).....	In progress
Metropolitan Arts Council – Bookcase.....	Jay Leonard.....	Starting in Jan 2018

Ongoing Projects

Toys Workshop.....	Rob Barhorst.....	In progress
Beads of Courage.....	Jim Kilton.....	In progress
Habitat.....	Bill Bagwell.....	In progress
SC Veterans Urns.....	John Arnold.....	In progress
Conestee Park Signs.....	Dennis Defrancesco.....	In progress
Flag Display Cases.....	Steve Estabrooks.....	In progress

CHARITABLE PROJECTS / November 17 to December 20

	Hours
Santa's Workshop (Toys)	211.5
SC Beads of Courage (Bead Boxes).....	21
SC Veterans Urns	4
Ronald McDonald House (Headboards)	4.5
Greenville Mental Health (Desk).....	164.5
Our Lady of the Rosary (Cabinet and Shelf)	7.5
Military History Club of the Carolinas (Benches & Displays)	69.5
Governor's School of the Arts (Cello, Viola and Violin Racks)	9.5
Total.....	492

MENTORING CLASSES / November 17 to December 20

	Hours
Combined total hours for adult classes.....	319
Youth Classes	157
Total.....	476

Charity had a nice month with 489 hours over 139 sessions!

As usual, Santa's toy makers led the pack, with 212 hours over 63 sessions,
but were followed by nice numbers from the Mental Health Desks! They had 164 hours over 36 sessions!

There was also a nice project for Military History Club of the Carolinas benches
with 65 hours over 21 sessions!

For mentoring, well the teen woodworkers amassed 314 hours over 66 sessions, led by the
mentors who donated 157 hours over 36 sessions! Following those numbers, the lathe mentoring
class totaled 223 hours over 36 sessions for a nice month!

Our supervisors and other leaders and volunteers gave 593 hours of their time over 200 sessions
to keep the GWG shop up and running! We owe each one of them our heartfelt thanks for all
that they do to make GWG possible for all of us!

- Jack McKay

NEXT GUILD MEETING - MONDAY, January 8, 2018
Social time begins 6:00 p.m.

Greenville Woodworkers Guild
Education Center
209 Holly Ridge Drive
Greenville, SC 29607
(864) 299-9663

For more information
www.greenvillewoodworkers.com



Greenville Woodworkers Guild
P.O. Box 825
Mauldin, SC 29662